

Amino acid based anionic surfactant

# AMISOFT® CS-22

*Natural, Mild, Eco.*

AMISOFT® CS-22 is a pioneer product of amino-acid-based weakly acidic surfactant. AMISOFT® CS-22 is an anionic surfactant produced from L-Glutamic acid (an amino acid) and plant-derived coconut fatty acid.



## PCPC INCI Name

DISODIUM COCOYL GLUTAMATE  
SODIUM COCOYL GLUTAMATE

The content of active ingredient: 25% in aqueous solution.

## Molecular Structure



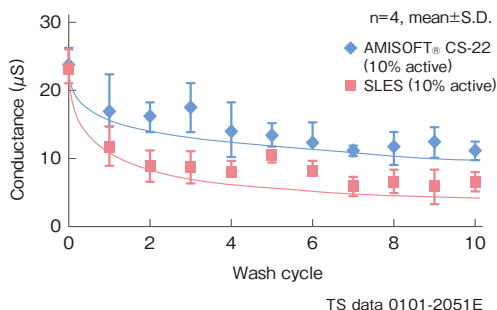
## Characteristics of AMISOFT® CS-22

- Suitable as an additive for skin and facial cleansers containing SLES or fatty acid soap.
- AMISOFT® CS-22 has an excellent conditioning effect to the skin, leaving a moisturized feeling without tautness. It also has an excellent conditioning effect to the hair, leaving silky feeling without a dry, coarse feel.
- AMISOFT® CS-22 is usable in a wide pH range, even in a weakly acidic range.
- AMISOFT® CS-22 generates moderate to good foaming and is an effective additive to conventional surfactants improving their mildness.
- The characteristics of being plant-derived, friendly to human and earth (highly biodegradable) contributes to possibilities for new concept products.

## Usage

- Body shampoo
- Facial cleansing gel
- Hair shampoo
- Facial cleansing foam
- Make-up cleansing
- Bar soap

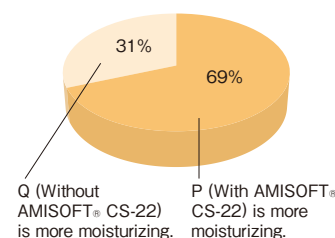
**AMISOFT® CS-22 does not cause skin dryness after heavy wash.**



**AMISOFT® CS-22 imparts moisturizing effect to a LES / CAPB-base cleansing formula.**

Test Formulation	P: With AMISOFT® CS-22	Q: Without AMISOFT® CS-22
Sodium Laureth Sulfate (27.5%)	12.5	12.5
Cocamidopropyl betaine (30%)	5.0	5.0
AMISOFT® CS-22 (25%)	2.5	-
Citric acid	q.s.	q.s.
Water	balance	balance
Total pH	100.0 / 5.5	100.0 / 5.5

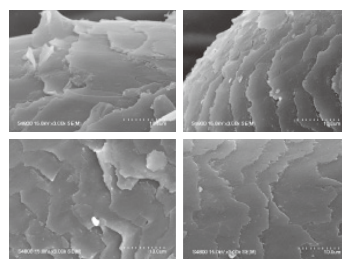
Result of hand-wash test (n=16)



**Addition of AMISOFT® CS-22 to an SLES-base hair shampoo improves wet combability, resulting in prevention of hair damage.**

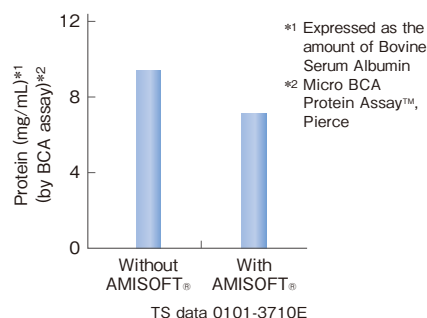
Test Formulation	Without AMISOFT®	With AMISOFT®
Sodium Laureth Sulfate (27%)	34.0	24.0
Cocamidopropyl Betaine (30%)	10.0	10.0
AMISOFT® CS-22 (25%)	-	11.0
Other ingredients	6.7	6.7
Guar Hydroxypropyltrimonium Chloride (2%)	10.0	10.0
pH adjuster	q.s.	q.s.
Water	balance	balance
Total pH	100.0 / 5.5	100.0 / 5.5

SEM images of hair after extensive combing (3 x 1000times)



a. Without AMISOFT® b. With AMISOFT®  
TS data 0101-3700E

Protein loss from hair



**Material Information**

Trade Name	Chemical Name	CAS No.	Physical Form	Packaging	PCPC INCI Name	Composition (%)
AMISOFT® CS-22	Sodium N-Cocoyl-L-Glutamate, Water	68187-30-4 (Disodium)	25% Aqueous Solution	18kg Can 200kg Drum 1t Container	Disodium Cocoyl Glutamate	20.0
		68187-32-6 (Sodium)			Sodium Cocoyl Glutamate	5.0
			Water	75.0		

Please contact the AJINOMOTO group, should you have questions about trademark registration.

**Japan**

**Ajinomoto Co., Inc.**  
15-1 Kyobashi 1-chome, Chuo-ku, Tokyo 104-8315, Japan  
TEL:+81-(3)-5250-8153 FAX:+81-(3)-5250-8259

**Ajinomoto Healthy Supply Co., Inc.**  
17-11 Kyobashi 2-Chome, Chuo-ku, Tokyo, 104-0031 Japan  
TEL:+81-(3)-3563-7584 FAX:+81-(3)-3563-3322

**North America**

**Ajinomoto North America, Inc.**  
4105 Poole Road Raleigh, NC 27610, USA  
TEL:+1-(201)-292-3180  
E-mail: Order:SPC\_CSRNC@ajiusa.com  
Sample Request:spc\_samples@ajiusa.com  
Reach to Sales rep:spc\_sales@ajiusa.com  
URL:http://www.ajiaminobeauty.com

**South America**

**Ajinomoto do Brasil Ind. e Com. de Alimentos Ltda.**  
Rua Vergueiro, 1737, Vila Mariana, CEP 04101-000, São Paulo, SP, Brazil  
TEL:+55-(11)-5080-6700  
FAX:+55-(11)-5908-8799

**Europe, Middle East, Africa & Russia**

**S.A. Ajinomoto OmniChem N.V.**  
Industrial Research Park-Fleming, B-1348 Louvain-La-Neuve, Belgium  
TEL:+32-(10)-483-222 FAX:+32-(10)-456-227

**Asia Pacific**

**Ajinomoto (Singapore) Pte. Ltd.**  
460 Alexandra Road, #11-04/05, PSA Building, Singapore 119963, Republic of Singapore  
TEL:+65-6257-1922 FAX:+65-6257-1622

**Taiso Commerce Inc.**  
10F, NO.68, SEC.2, Zhongshan N.RD., Zhongshan District, Taipei, Taiwan  
TEL:+886-(2)-2521-0180  
FAX:+886-(2)-2521-5904

**Ajinomoto Co., (H.K.) Ltd.**  
21/F, Bangkok Bank Building, 14-20 Bonham Strand West, Sheung Wan, Hong Kong  
TEL:+85-(2)-2534-2888  
FAX:+85-(2)-2534-2899